



**CLIPSAL**<sup>®</sup>  
D A T A C O M M S



**CLIPSAL** *titanium*<sup>®</sup>

# The Next Generation of Data Communications Solutions

In 2003, Clipsal Datacomms embarked on a research and development program with the intention of introducing a range of products that would revolutionise the industry.

The launch and subsequent success of Clipsal Titanium® has surpassed all expectations with strong demand within the market and positive feedback from installers and end users alike.

The Research and Development Teams at Clipsal are continuing this trend with the introduction of complimentary products for the existing Patch Panels and Modular Jacks. The new Clipsal Titanium® Free Standing Cabinets will set new benchmarks in systems enclosure functionality and aesthetics. Designed from the ground up, these cabinets have been developed for ease of installation, superior cable management and striking contemporary looks providing the end user with a practical solution for their systems enclosure requirements.

Flexiport Wall Plates are a truly innovative inclusion to the range, incorporating an ingenious rotating bezel that provides a full 90° field of adjustment. These products are especially beneficial in confined spaces where there is restricted access to workstation outlets and patch leads can be overstressed. With the option of rotating the bezel either up or down, users can rest assure that they will obtain maximum performance from their data network infrastructure.

Mirroring the sleek, modern fascia of the Patch Panels, the cutting-edge Clipsal Titanium® Fibre Enclosures will take pride of place in any network cabinet. Utilising a modular design, installers and end users have the flexibility of customising their adaptor selection to suit specific requirements and preferences. A myriad of additional product features ensure that these products will set new standards for innovation and functionality in fibre optic enclosure design.

As we continue to strive for excellence in data communications product design, our customers can rest assure that there will be many more innovative, functional and aesthetically pleasing new products introduced into the Clipsal Titanium® portfolio.

**CLIPSAL** titanium®



# Free Standing Cabinets

The Clipsal Titanium® range of Free Standing and Wall Cabinets will set new standards for contemporary design and systems enclosure functionality. Clipsal Titanium® Cabinets combine a metallic finished enclosure with a curved and tinted front perspex door to match the latest trends in office design.

Innovative features include the Clipsal Orbit™ Surround Power System as a substitute for power rails, allowing users to plug in the adaptors and position the power outlet exactly where it is required. Miniature Circuit Breaker (MCB) protection is provided on the Orbit™ Surround Power System ensuring maximum protection of your valuable active equipment and servers.

No compromise has been made on performance or practicality. The cabinet's steel frame construction is designed to cope with heavy equipment including servers, network bridges and routers all without buckling under the load.

The Clipsal Titanium® Cabinet Range is available in wall mounting cabinets and both 19" and 24" free standing enclosures. The steel rear door and sides are removable for easy access to racks, hubs and servers while the shelf mounting rails can be accessed from the front and rear for more convenient installation and modification. Clipsal Titanium® Cabinets maintain Clipsal's policy of competitive advantage through innovation with products that set new standards for data communications systems enclosure design, functionality and aesthetics.

## PRODUCT FEATURES

- contemporary styling
- curved and tinted front perspex door
- integrated vertical cable management
- Clipsal Orbit™ wiring systems replaces traditional power rails
- dual steel rear door and removable sides
- front and rear shelf mounting rails.

## OPTIONAL ACCESSORIES

- cable trays
- light and heavy duty castor sets
- fan trays
- cantilever, fixed or telescopic shelves
- horizontal and vertical power rails
- plain, raised and ventilated tops.



### Free Standing Cabinets

<b>3106TC27C824</b>	27RU Complete Clipsal Titanium® Cabinet 800mm x 800mm
<b>3106TC27C924</b>	27RU Complete Clipsal Titanium® Cabinet 900mm x 800mm
<b>3106TC27C1024</b>	27RU Complete Clipsal Titanium® Cabinet 1000mm x 800mm
<b>3106TC27C1224</b>	27RU Complete Clipsal Titanium® Cabinet 1200mm x 800mm
<b>3106TC39C824</b>	39RU Complete Clipsal Titanium® Cabinet 800mm x 800mm
<b>3106TC39C924</b>	39RU Complete Clipsal Titanium® Cabinet 900mm x 800mm
<b>3106TC39C1024</b>	39RU Complete Clipsal Titanium® Cabinet 1000mm x 800mm
<b>3106TC39C1224</b>	39RU Complete Clipsal Titanium® Cabinet 1200mm x 800mm
<b>3106TC45C824</b>	45RU Complete Clipsal Titanium® Cabinet 800mm x 800mm
<b>3106TC45C924</b>	45RU Complete Clipsal Titanium® Cabinet 900mm x 800mm
<b>3106TC45C1024</b>	45RU Complete Clipsal Titanium® Cabinet 1000mm x 800mm
<b>3106TC45C1224</b>	45RU Complete Clipsal Titanium® Cabinet 1200mm x 800mm
<b>3106TC42C824*</b>	42RU Complete Clipsal Titanium® Cabinet 800mm x 800mm
<b>3106TC42C924*</b>	42RU Complete Clipsal Titanium® Cabinet 900mm x 800mm
<b>3106TC42C1024*</b>	42RU Complete Clipsal Titanium® Cabinet 1000mm x 800mm
<b>3106TC42C1224*</b>	42RU Complete Clipsal Titanium® Cabinet 1200mm x 800mm

\*Available in Southeast Asia, Asia and Middle Eastern markets.

# Wall Cabinets



6RU



12RU

The Clipsal Titanium® Range of Wall Mounted Enclosures offer a myriad of innovative features, designed for ease of installation and maintenance. The contemporary aesthetics have been styled to enhance the interior décor of modern commercial office environments and residential dwellings.

## 6RU Wall Cabinets

### ACCESSORIES AVAILABLE

CAT. NO.	DESCRIPTION
3106PH (6W1FP to 10W2FP)	Horizontal Power Rails
3106SC (2U23 to 2U28)	Shelf Cantilever
3106WCT6URR	12RU Rear Rail

### PRODUCT FEATURES

- separate rear hinged frame with rack units
- knock outs in rear frame for seamless duct connection
- hinged cabinet mounting onto frame or wall
- internal latch for cabinet hinging (left & right sides)
- multiple mounting widths to suit different stud wall requirements
- choice of cabinet hinging on either side (left or right)
- choice of door hinging on either side (left or right)
- contemporary aesthetics
- 500mm deep cabinets can accommodate fibre enclosures.

## 12RU Wall Cabinets

### ACCESSORIES AVAILABLE

CAT. NO.	DESCRIPTION
3106PH (6W1FP to 10W2FP)	Horizontal Power Rails
3106SC (2U23 to 2U28)	Shelf Cantilever
3106WCT12URR	12RU Rear Rail
3106CT12U15	12RU Cable Tray 150mm
3106CT12U22	12RU Cable Tray 225mm
3106CT12U30	12RU Cable Tray 300mm

### CUSTOMER BENEFITS

- hinged frame allows for ease of installation and maintenance
- rack units on rear frame allow for additional equipment
- internal latch provides effortless access to the rear of the cabinet
- simple and flawless connection to ducting Spirit level ensures parallel, horizontal mounting
- hinging and locking options to suit customer preferences
- superior styling to enhance the latest office décors.



6RU Wall Cabinets				
CATALOGUE No	DESCRIPTION	HEIGHT	WIDTH	DEPTH*
3106WTC6U35	6RU Wall Cabinet 350mm deep	327mm	572mm	507mm
3106WTC6U50	6RU Wall Cabinet 500mm deep	327mm	572mm	657mm

\* includes 120mm rear frame

12RU Wall Cabinets				
CATALOGUE No	DESCRIPTION	HEIGHT	WIDTH	DEPTH*
3106WTC12U35	12RU Wall Cabinet 350mm deep	588mm	572mm	507mm
3106WTC12U50	12RU Wall Cabinet 500mm deep	588mm	572mm	657mm

\* includes 120mm rear frame



18RU

The Clipsal Titanium® range of Wall Mounted Enclosures offer a myriad of innovative features, designed for ease of installation and maintenance. The contemporary aesthetics have been styled to enhance the interior décor of modern commercial office environments and residential dwellings.

## 18RU Wall Cabinets

### ACCESSORIES AVAILABLE

CAT. NO.	DESCRIPTION
3106PH (6W1FP to 10W2FP)	Horizontal Power Rails
3106SC (2U23 to 3U30)	Shelf Cantilever
3106WCT18URR	18RU Rear Rail
3106CT18U15	18RU Cable Tray 150mm
3106CT18U22	18RU Cable Tray 225mm

### PRODUCT FEATURES

- separate rear hinged frame with rack units
- knock outs in rear frame for seamless duct connection
- hinged cabinet mounting onto frame or wall
- internal latch for cabinet hinging (left and right sides)
- multiple mounting widths to suit different stud wall requirements
- choice of cabinet hinging on either side (left or right)
- choice of door hinging on either side (left or right)
- contemporary aesthetics
- 500mm deep cabinets can accommodate fibre enclosures.

### CUSTOMER BENEFITS

- hinged frame allows for ease of installation and maintenance
- rack units on rear frame allow for additional equipment
- internal latch provides effortless access to the rear of the cabinet
- simple and flawless connection to ducting spirit level ensures parallel, horizontal mounting
- hinging and locking options to suit customer preferences
- superior styling to enhance the latest office décors.

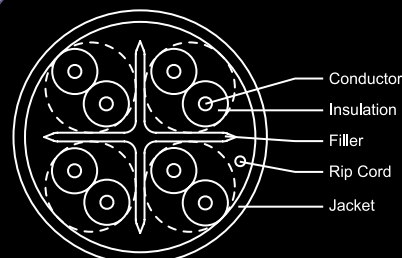
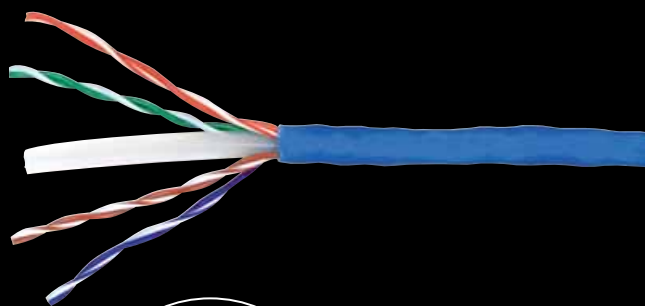


#### 18RU Wall Cabinet

CATALOGUE No	DESCRIPTION	HEIGHT	WIDTH	DEPTH*
3106WTC18U50	18RU Wall Cabinet 500mm deep	855mm	572mm	657mm

\* includes 120mm rear frame

## Category 6 Cable



Clipsal Titanium® 4-Pair Category 6 Cable is a superior product delivering excellent network performance when used in conjunction with other Clipsal Titanium® Category 6 and Category 6+ products.

The Category 6 cable consists of 4 pairs of solid insulated copper 24 AWG (0.57mm) and is UL listed with a CM fire rating. It is designed for use in horizontal cabling situations and supplied in 305m (1,000ft) easy pull out boxes.

The Category 6 cable provides a significant margin (10 dB) above the minimum Category 6 Near End Crosstalk NEXT requirement of TIA/EIA 568-B.2-1 and ISO/IEC 11801.

### PHYSICAL SPECIFICATIONS

Rated Temperature (°C)	75
Product Standard Certification	UL File E197794
Flammability Test	CM
Application	Horizontal Wiring in LAN
Reference Standard	UL Subject 444, EIA/TIA568 & ISO/IEC 11801, IEC61156-5

### CONSTRUCTION

Conductor	Solid Bare Copper
AWG	24
Conductor Dia. Nom. (mm)	0.54
Insulation	PE
Average Thickness (mm)	0.22
Min. Point Thickness (mm)	0.18
Insulation Diameter (±0.10mm)	0.95
Twisting Lay Length (mm)	30 underneath
Cabling Lay Length (mm)	200 underneath
Filler	PE
Jacket	PVC
Average Thickness (±0.05mm)	0.50
Min. Point Thickness (mm)	0.43
Outer Diameter (±0.2mm)	6.00
Rip Cord	YES

### MECHANICAL CHARACTERISTICS

Test Object	Jacket
Test Material	PVC
Before Tensile Strength (Mpa)	≥13.8
Aging Elongation (%)	≥100
Aging Condition (°C x hrs)	100 x 240
After Tensile Strength (Mpa)	≥85% of unaged
Aging Elongation (%)	≥50% of unaged
Cold Bend (-20 ± 2°C x 4hrs)	No crack

### ELECTRICAL CHARACTERISTICS

Frequency (MHz)	Return Loss (dB)	Attenuation (dB/100m)	NEXT (dB)	ACR (dB)
1	20.0	2.0	74.3	72
4	23.0	3.8	65.3	61
8	24.5	5.3	60.8	55
10	25.0	6.0	59.3	53
16	25.0	7.6	56.2	49
20	25.0	8.5	54.8	46
25	24.3	9.5	53.3	44
31.25	23.6	10.7	51.9	41
62.5	21.5	15.4	47.4	32
100	20.1	19.8	44.3	25
150	18.9	24.7	41.7	16.9
200	18.0	29.0	39.8	10.8
250	17.3	32.8	38.3	5.5

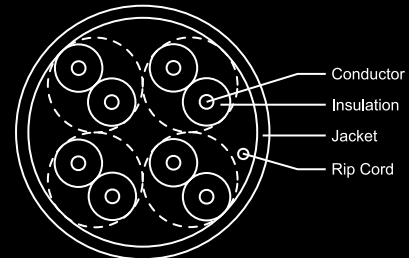
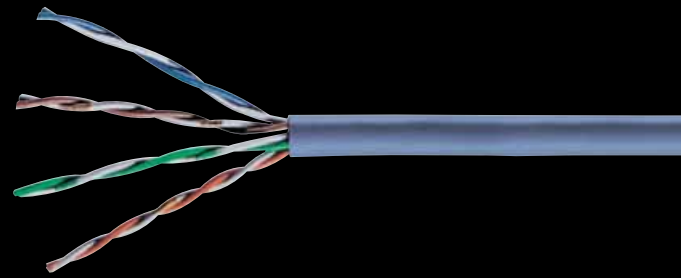
Frequency (MHz)	PSNEXT (dB)	ELFEXT (dB/100m)	PSELFEXT (dB/100m)	Delay (ns/100m)
1	72.3	67.8	64.8	570.0
4	63.3	55.8	52.8	552.0
8	58.8	49.7	46.7	546.7
10	57.3	47.8	44.8	545.4
16	54.2	43.7	40.7	543.0
20	52.8	41.8	38.8	542.0
25	51.3	39.8	36.8	541.2
31.25	49.9	37.9	34.9	540.4
62.5	45.4	31.9	28.9	538.6
100	42.3	27.8	24.8	537.6
150	39.7	24.3	21.3	536.9
200	37.8	21.8	18.8	536.5
250	36.3	19.8	16.8	536.3

1.0-100.0MHz Input Impedance (Ohms)	100 ± 15
100-250MHz Input Impedance (Ohms)	100 ± 22
1.0-250.0MHz Delay Skew (ns/100m)	≤45
Pair-to-Ground Capacitance Unbalance (pF/100m)	≤330
Max. Conductor DC Resistance 20°C (Ohms/km)	73.2
Resistance Unbalance (%)	≤5

### CATALOGUE NO. DESCRIPTION

**2D4P6IPV3B** Clipsal Titanium® Category 6, 4-Pair Cable, 24AWG, 305m, Blue  
**colours:** (BK) Black, (BU) Blue, (GR) Green, (RD) Red, (GY) Grey, (YL) Yellow

## Category 5e Cable 5e



Clipsal Titanium® Category 5e 4-Pair Cable consists of 24 AWG (0.57mm) solid-copper conductors insulated with high-density polyethylene. The insulated conductors are tightly twisted into pairs and covered with PVC material.

The Clipsal Titanium® Category 5e 4-Pair Cable provides excellent high-speed transmission, is certified to 155MHz and supports applications such as 155Mb/s ATM, 622Mb/s ATM and IEEE 802.3 1,000 Base-T (Gigabit Ethernet) standard, using parallel transmission technology. This product is UL listed with a CM fire rating.

### PHYSICAL SPECIFICATIONS

Rated Temperature (°C)	75
Product Standard Certification	UL
Flammability Test	CM
Application	Horizontal Wiring in LAN
Reference Standard	UL Subject 444, EIA/TIA568 & ISO/IEC 11801

### CONSTRUCTION

Conductor	Solid Bare Copper
AWG	24
Conductor Dia. Nom. (mm)	0.505
Insulation	PE
Average Thickness (mm)	0.19
Min. Point Thickness (mm)	0.16
Insulation Diameter (±0.10mm)	0.88
Twisting Lay Length (mm)	30 underneath
Cabling Lay Length (mm)	200 underneath
Jacket	PVC
Average Thickness (±0.05mm)	0.50
Min. Point Thickness (mm)	0.43
Outer Diameter (±0.2mm)	4.9
Rip Cord	YES

### MECHANICAL CHARACTERISTICS

Test Object	Jacket
Test Material	PVC
Before Tensile Strength (Mpa)	≥13.8
Aging Elongation (%)	≥100
Aging Condition (°C x hrs)	100 x 240
After Tensile Strength (Mpa)	≥85% of unaged
Aging Elongation (%)	≥50% of unaged
Cold Bend (-20 ± 2°C x 4hrs)	No crack

### ELECTRICAL CHARACTERISTICS

Frequency (MHz)	Return Loss (dB)	Attenuation (dB/100m)	NEXT (dB)	ACR (dB)
0.772	19.4	1.8	67.0	65
1	20.0	2.0	65.3	63
4	23.0	4.1	56.3	52
8	24.5	5.8	51.8	46
10	25.0	6.5	50.3	44
16	25.0	8.2	47.3	39
20	25.0	9.3	45.8	37
25	24.3	10.4	44.3	34
31.25	23.6	11.7	42.9	31
62.5	21.5	17.0	38.4	21
100	20.1	22.0	35.3	13

Frequency (MHz)	PSNEXT (dB)	ELFEXT (dB/100m)	PSELFEXT (dB/100m)	Delay (ns/100m)
0.772	64.0	66.0	63.0	575.0
1	62.3	63.8	60.8	570.0
4	53.3	51.7	48.7	552.0
8	48.8	45.7	42.7	546.7
10	47.3	43.8	40.8	545.4
16	44.3	39.7	36.7	543.0
20	42.8	37.7	34.7	542.0
25	41.3	35.8	32.8	541.2
31.25	39.9	33.9	30.9	540.4
62.5	35.4	27.8	24.8	538.6
100	32.3	23.8	20.8	537.6

1.0-100.0MHz Input Impedance (Ohms)	100 ± 15
1.0-250.0MHz Delay Skew (ns/100m)	≤45
Pair-to-Ground Capacitance Unbalance (pF/100m)	≤330
Max. Conductor DC Resistance 20°C (Ohms/km)	93.8
Resistance Unbalance (%)	≤5

### CATALOGUE NO. DESCRIPTION

**2D4P5IPV3B** Clipsal Titanium® Category 5e, 4-Pair Cable, 24AWG, 305m, Blue  
**colours:** (BK) Black, (BU) Blue, (GR) Green, (RD) Red, (GY) Grey, (YL) Yellow

## Category 6 Patch Cord

The Clipsal Titanium® Category 6 Patch Cord is a superior product delivering the best network performance when used in conjunction with other Clipsal Titanium® Category 6 products.

The patch cord is constructed of high grade cable and quality RJ45 plugs, and is designed to operate up to 300MHz. This enables it to operate successfully in a Category 6 environment.

Patch cords are available in white and blue, with matching boots to help with circuit identification in the cabinet/rack.

As an integral part of the Clipsal Titanium® Series, this product has a lifetime warranty and system performance guarantee when installed by a Clipsal Endorsed Installer or Endorsed Partner.



### TRANSMISSION SPECIFICATIONS

Parameter	Value (-dB)	Cat 6 (-dB)
NEXT	55.1	≥54.0
Power Sum NEXT	52.0	≥54.0
FEXT	49.8	≥43.1
Power Sum FEXT	46.9	≥40.1
Attenuation	0.1	≤0.2
Return Loss	27.0	≥23.0

### MECHANICAL CHARACTERISTICS

Cable	
Gauge	FCC part 68, Subpart F and IEC-60603-7 compliant
Pair Count	4-pair individually colour coded with filler and PVC jacket
Sequence	Wiring sequence 568 A/B
Durability	1,000 mating cycles
RJ45 Plug	Polycarbonate, FCC Part 68 Subpart F, UL 94V-0
Plug Boot	PVC
Contact Material	Phosphor bronze with 50 micro-inches gold over 100 micro-inches nickel
Electrical	
Dielectric Strength	100V RMS at 60Hz for 1 minute
Voltage Rating	150Vac maximum
Current Rating	1.5A maximum
Insulation	500mΩ minimum
Contact Resistance	10mΩ maximum

### PRODUCT FEATURES

- fully compliant to AS/NZS 3080:2003, ISO/IEC 11801 Edition 2 2002 and ANSI/TIA/EIA-568-B Series Connecting Hardware Standards
- UL CMR fire rated jacketing
- PE insulation on conductors
- PVC outer jacket material
- backward compatible with Category 5 and 5e products.

### CUSTOMER BENEFITS

- performs beyond the latest Category 6 International Standards
- comes in various lengths to assist with better cable management
- is backward compatible with Category 5 and 5e products, allowing component mixing without degrading the network below the minimum component category.

CATALOGUE NO.	DESCRIPTION
<b>RJ6A8/05PL (XX)*</b>	Clipsal Titanium® Category 6 Modular Patch Cord, 0.5m
<b>RJ6A8/10PL (XX)*</b>	Clipsal Titanium® Category 6 Modular Patch Cord, 1m
<b>RJ6A8/20PL (XX)*</b>	Clipsal Titanium® Category 6 Modular Patch Cord, 2m
<b>RJ6A8/30PL (XX)*</b>	Clipsal Titanium® Category 6 Modular Patch Cord, 3m
<b>RJ6A8/40PL (XX)*</b>	Clipsal Titanium® Category 6 Modular Patch Cord, 4m
<b>RJ6A8/50PL (XX)*</b>	Clipsal Titanium Category 6 Modular Patch Cord, 5m
<b>(XX) for colour: (BK) Black, (BU) Blue, (GR) Green, (RD) Red, (WE) White, (GY) Grey, (YL) Yellow</b>	
<i>* RJ6A8/##PL (XX) - T568A standard products for Australian and New Zealand markets.</i>	
<b>RJ6B8/10PL (XX)**</b>	Clipsal Titanium® Category 6 Modular Patch Cord, 1m
<b>RJ6B8/20PL (XX)**</b>	Clipsal Titanium® Category 6 Modular Patch Cord, 2m
<b>RJ6B8/30PL (XX)**</b>	Clipsal Titanium® Category 6 Modular Patch Cord, 3m
<b>RJ6B8/50PL (XX)**</b>	Clipsal Titanium® Category 6 Modular Patch Cord, 5m
<b>(XX) for colour: (BK) Black, (BU) Blue, (GR) Green, (RD) Red, (WE) White, (GY) Grey, (YL) Yellow</b>	
<i>** RJ6B8/##PL (XX) - T568B standard products for Southeast Asia, Asia and Middle Eastern markets.</i>	



# Category 5e Patch Cord *5e*



The Clipsal Titanium® Series Category 5e Patch Cord is a superior product delivering the best network performance when used in conjunction with other Clipsal Titanium® Category 5e products.

The patch cord is constructed of high grade cable and quality RJ45 plugs. The RJ45 plugs are provided with a fully moulded boot and a moulded insert to ensure pair integrity. The fully moulded boot ensures excellent strain relief and together with the insert, ensures that performance is not degraded when using the patch cord.

Patch cords are available in multiple colours to help with circuit identification in the cabinet/rack.

As an integral part of the series, this product has a lifetime warranty and system performance guarantee when installed by a Clipsal Endorsed Installer or Endorsed Partner.

## TRANSMISSION SPECIFICATIONS

@100MHz	Product Specification	Cat 5e Standard
Crosstalk (-dB) - 2M	35.3	35.0
Crosstalk (-dB) - 5M	35.1	34.7
Crosstalk (-dB) - 10M	34.8	34.5
Return Loss (-dB)	20.0	18.0

## MECHANICAL CHARACTERISTICS

Cable	
Gauge	FCC part 68, Subpart F and IEC-60603-7 compliant
Pair Count	4-pair individually colour coded with filler and PVC jacket
Sequence	Wiring sequence 568 A/B
Durability	1,000 mating cycles
RJ45 Plug	Polycarbonate, FCC Part 68 Subpart F, UL 94V-0
Plug Boot	PVC
Contact Material	Phosphor bronze with 50 micro-inches gold over 100 micro-inches nickel
Electrical	
Dielectric Strength	100V RMS at 60Hz for 1 minute
Voltage Rating	150Vac maximum
Current Rating	1.5A maximum
Insulation	1mΩ minimum
Contact Resistance	10mΩ maximum

## PRODUCT FEATURES

- fully compliant to AS/NZS 3080:2003 Class D and Category 5e Standards
- UL CMR fire rated jacketing
- PE insulation on conductors
- PVC outer jacket material
- high-quality UTP/RJ45 Patch Cords
- fully moulded RJ45 plugs ensure stable performance.

## CUSTOMER BENEFITS

- comes in various lengths to assist with better cable management
- fully moulded boot and insert not only ensures pair integrity but also provides an enhanced strain relief, especially during installations or moves.

### CATALOGUE NO. DESCRIPTION

<b>RJ5A8/05PL (XX)*</b>	Clipsal Titanium® Category 5e Modular Patch Cord, 0.5m
<b>RJ5A8/10PL (XX)*</b>	Clipsal Titanium® Category 5e Modular Patch Cord, 1m
<b>RJ5A8/15PL (XX)*</b>	Clipsal Titanium® Category 5e Modular Patch Cord, 1.5m
<b>RJ5A8/20PL (XX)*</b>	Clipsal Titanium® Category 5e Modular Patch Cord, 2m
<b>RJ5A8/30PL (XX)*</b>	Clipsal Titanium® Category 5e Modular Patch Cord, 3m
<b>RJ5A8/40PL (XX)*</b>	Clipsal Titanium® Category 5e Modular Patch Cord, 4m
<b>RJ5A8/50PL (XX)*</b>	Clipsal Titanium® Category 5e Modular Patch Cord, 5m

**(XX) for colour: (BK) Black, (BU) Blue, (GR) Green, (RD) Red, (WE) White, (GY) Grey, (YL) Yellow**

\* RJ5A8/##PL (XX) - T568A standard products for Australian and New Zealand markets.

<b>RJ5B8/10PL (XX)**</b>	Clipsal Titanium® Category 5e Modular Patch Cord, 1m
<b>RJ5B8/20PL (XX)**</b>	Clipsal Titanium® Category 5e Modular Patch Cord, 2m
<b>RJ5B8/30PL (XX)**</b>	Clipsal Titanium® Category 5e Modular Patch Cord, 3m
<b>RJ5B8/50PL (XX)**</b>	Clipsal Titanium® Category 5e Modular Patch Cord, 5m

**(XX) for colour: (BK) Black, (BU) Blue, (GR) Green, (RD) Red, (WE) White, (GY) Grey, (YL) Yellow**

\*\* RJ5B8/##PL (XX) - T568B standard products for Southeast Asia, Asia and Middle Eastern markets.

# Category 6+ 24-Port ID6 Patch Panel **6+**



The Clipsal Datacomms Clipsal Titanium® range of products are the next generation of data communications solutions. The Category 6+ ID6 Patch Panels are a perfect combination of sleek looks, outstanding performance and end user functionality.

The 24 individual Category 6+ shuttered Keystone modular jacks incorporate Clipsal's patented flushed faced, zero footprint design and Lead Frame Technology, eliminating possible PC Board failures, improving consistency in performance, and exactly matching the work area outlets. This product incorporates Channel Designation Dials with icons for the top and colours for the bottom of each outlet. It also features top and bottom hinged label windows allowing for further identification of each channel designation.

Velcro cable ties, cage nuts and screws are also provided with the product.

Combined with other Clipsal Titanium® products, the Category 6+ ID6 Patch Panel provides the ultimate structured cabling solution.

## ELECTRICAL CHARACTERISTICS

Dielectric Strength	1,000V RMS at 60Hz for 1 minute
Current Rating	1.5Amp maximum
Insulation Resistance	200mΩ minimum
Contact Resistance	1mΩ per contact
Temperature Range	-40 °C to +70 °C
Transmission Performance	exceeds ISO/IEC 11801 Class E AS/NZS 3080:2003 Class E

## MECHANICAL CHARACTERISTICS

<b>Modular Connector</b>	
RJ45 8-Pin Connector	FCC part 68, Subpart F and IEC-60603-7 compliant
Durability	1,000 mating cycles
Material	Phosphor bronze with 50 micro-inches of gold over 100 micro-inches nickel plating
<b>IDC Connector</b>	
IDC Connector	Insulation slicing of 22 to 24 AWG (0.64mm to 0.41mm)
Insulation Diameter (Wire)	0.70mm - 1.40mm
Connector Material	Phosphor bronze with nickel plating

IDC Body & Cover Material Fire-Retardant, UL 94V-0, Plastic

## PRODUCT FEATURES

- aesthetic, contemporary design
- shuttered outlets/ports
- top (Icon) and bottom (Colour) Designation Dials
- top and bottom hinged label windows for additional identification
- lead Frame Technology eliminates the possibility of PC Board failure
- powder coated metal framework
- universal colour coding for 568A and 568B standards
- removable rear cable management tray
- compatible with standard 19" equipment frames
- IDC termination using a Clipsal GigaPRO or Krone tool
- fully compliant to AS/NZS 3080:2003, ISO/IEC 11801 Edition 2 2002 and ANSI/TIA/EIA-568-B Series Connecting Hardware Standards.

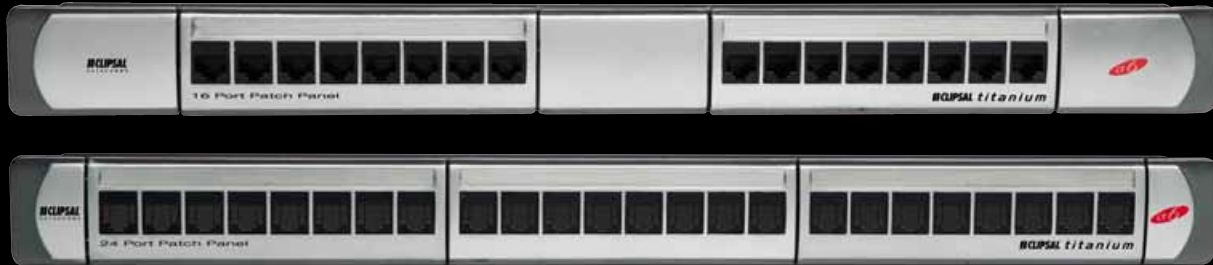
## CUSTOMER BENEFITS

- contemporary design will improve the aesthetics of all installations
- outlet shutters protect the contact pins from dust ingress, insect infestation and the insertion of foreign objects
- channel designation dials and hinged windows provide an extensive level of designation identification
- better than Category 6 performance
- complete with all mounting and cable fixing hardware.
- rear cable management tray is supplied loose, allowing the installer to fit after termination
- powder coated metal frame is robust and protects the patch panel from corrosion and scratching
- compliance with international standards gives the customer peace of mind that their network will perform to link, channel and application requirements
- industry leading Lifetime Warranty - unique to the market!



CATALOGUE NO.	DESCRIPTION
31071U24KPPI	Category 6+ 24-Port Clipsal Titanium® ID6 Patch Panel

## Category 6 & 6+ 16-Port & 24-Port Patch Panels



The Clipsal Datacomms Clipsal Titanium® range of products are the next generation of data communications solutions. The Category 6 Patch Panels are a perfect combination of sleek looks and outstanding performance.

The 24 individual Category 6 Keystone modular jacks incorporate Lead Frame Technology, eliminating possible PC Board failures, improving consistency in performance, and exactly matching the work area outlets. These modular jacks are colour coded for both 568A and 568B standards and can be terminated using a Clipsal GigaPRO or Krone tool. Clear wire retaining caps are supplied and can be used to provide additional cable strain relief.

The sleek silver face of the product comprises three designation strip holders with a label kit supplied. Velcro cable ties, cage nuts and screws are also provided with the product.

Combined with other Clipsal Titanium® or Professional Series Products, they are the perfect solution to your voice and data communications needs.

### ELECTRICAL CHARACTERISTICS

Dielectric Strength	1,000V RMS at 60Hz for 1 minute
Current Rating	1.5Amp maximum
Insulation Resistance	200mΩ minimum
Contact Resistance	1mΩ per contact
Temperature Range	-40° C to +70° C
Transmission Performance	exceeds ISO/IEC 11801 Class E AS/NZS 3080:2003 Class E

### MECHANICAL CHARACTERISTICS

<b>Modular Connector</b>	
RJ45 8-Pin Connector	FCC part 68, Subpart F and IEC-60603-7 compliant
Durability	1,000 mating cycles
Material	Phosphor bronze with 50 micro-inches of gold over 100 micro-inches nickel plating
<b>IDC Connector</b>	
IDC Connector	Insulation slicing of 22 to 24 AWG (0.64mm to 0.41mm)
Insulation Diameter (Wire)	0.70mm - 1.40mm
Connector Material	Phosphor bronze with nickel plating

IDC Body & Cover Material Fire-Retardant, UL 94V-0, Plastic

### PRODUCT FEATURES

- aesthetic, contemporary design.
- lead Frame Technology eliminates the possibility of PC Board failures
- powder coated metal framework
- universal colour-coding for 568A and 568B standards
- removable rear cable management tray.
- compatible with standard 19" equipment frames
- IDC termination using a Clipsal GigaPRO or Krone tool
- fully compliant to AS/NZS 3080:2003, ISO/IEC 11801 Edition 2 2002 and ANSI/TIA/EIA-568-B Series Connecting Hardware Standards.

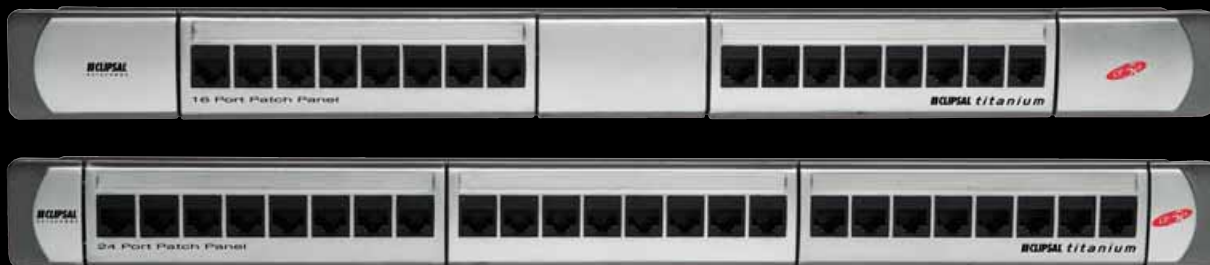
### CUSTOMER BENEFITS

- contemporary design will improve the aesthetics of all installations
- better than Category 6 Performance
- complete with all mounting and cable fixing hardware.
- rear cable management tray is supplied loose, allowing the installer to fit after termination
- the front labeling system provides a clear and efficient means of identifying circuits
- powder coated metal frame is robust and protects the patch panel from corrosion and scratching
- compliance with international standards gives the customer peace of mind that their network will perform to link, channel and application requirements
- industry leading Lifetime Warranty - unique to the market!



CATALOGUE NO.	DESCRIPTION
<b>RJ6A1/16PP</b>	Category 6 16-Port Clipsal Titanium® Patch Panel
<b>RJ6A1/24PP</b>	Category 6 24-Port Clipsal Titanium® Patch Panel
<b>RJ6A1/16PPSH</b>	Category 6+ 16-Port Clipsal Titanium® Shuttered Patch Panel
<b>RJ6A1/24PPSH</b>	Category 6+ 24-Port Clipsal Titanium® Shuttered Patch Panel

# Category 5e 16-Port & 24-Port Patch Panels *5e*



The Clipsal Datacomms Clipsal Titanium® range of products are the next generation of data communications solutions. The Category 5e Patch Panels are a perfect combination of sleek looks and outstanding performance.

They feature 24 individual Category 5e modular jacks that are colour coded for both 568A and 568B standards and can be terminated using a Clipsal GigaPRO or Krone tool. Clear wire retaining caps are supplied and can be used to provide additional cable strain relief.

The sleek silver face of the product comprises three designation strip holders with a label kit supplied. Velcro cable ties, cage nuts and screws are also provided with the product.

Combined with other Clipsal Titanium® or Professional Series Products, they are the perfect solution to your voice and data communications needs.

## ELECTRICAL CHARACTERISTICS

Dielectric Strength	1,000V RMS at 60Hz for 1 minute
Current Rating	1.5A maximum
Insulation Resistance	10mΩ minimum
Contact Resistance	2mΩ per contact
Temperature Range	-10° C to +60° C
Transmission Performance	exceeds ISO/IEC 11801 Class E AS/NZS 3080:2003 Class E

## MECHANICAL CHARACTERISTICS

<b>Modular Connector</b>	
RJ45 8-Pin Connector	FCC part 68, Subpart F and IEC-60603-7 compliant
Durability	750 insertion cycles minimum
Material	Phosphor bronze with 50 micro-inches of gold over 100 micro-inches nickel plating
<b>IDC Connector</b>	
IDC Connector	Insulation slicing of 22 to 24 AWG (0.64mm to 0.41mm)
Insulation Diameter (Wire)	0.70mm - 1.60mm
Connector Material	Phosphor bronze with nickel plating

IDC Body & Cover Material Fire-Retardant, UL 94V-0, Plastic

## PRODUCT FEATURES

- aesthetic, contemporary design
- powder coated metal framework
- universal colour coding for 568A and 568B standards
- removable rear cable management tray
- compatible with standard 19" equipment frames
- IDC termination using a Clipsal GigaPRO or Krone tool
- fully compliant to AS/NZS 3080:2003, ISO/IEC 11801 Edition 2 2002 and ANSI/TIA/EIA-568-B Series Connecting Hardware Standards.

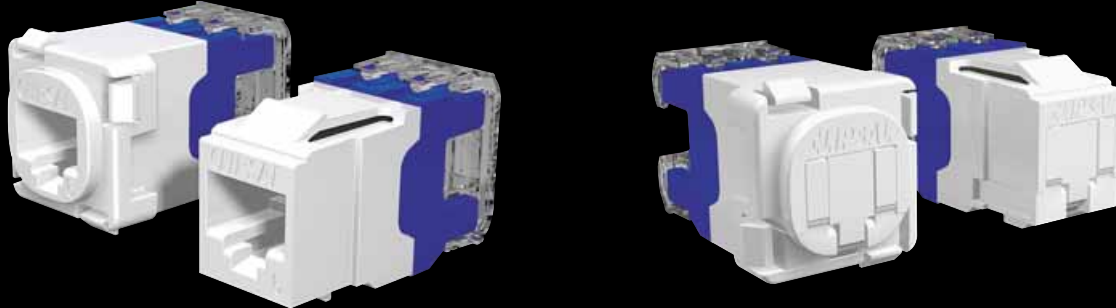
## CUSTOMER BENEFITS

- contemporary design will improve the aesthetics of all installations
- complete with all mounting and cable fixing hardware
- rear cable management tray is supplied loose, allowing the installer to fit after termination
- the front labelling system provides a clear and efficient means of identifying circuits
- powder coated metal frame is robust and protects the patch panel from corrosion and scratching
- compliance with international standards gives the customer peace of mind that their network will perform to link, channel and application requirements
- industry leading Lifetime Warranty - unique to the market!



CATALOGUE NO.	DESCRIPTION
<b>RJ5A1/16PP</b>	Category 5e 16-Port Clipsal Titanium® Patch Panel
<b>RJ5A1/24PP</b>	Category 5e 24-Port Clipsal Titanium® Patch Panel

## Category 6 & 6+ Modular Jacks



The Clipsal Datacomms Clipsal Titanium® range of products are the next generation of data communications solutions.

The Category 6 shuttered modular jacks incorporate Clipsal's patented shutter mechanism. Combine this feature with Lead Frame Technology, and you have the most technically advanced Category 6 connector on the market. These modular jacks are colour coded for both 568A and 568B standards and can be terminated using a Clipsal GigaPRO or Krone tool.

Clear wire retaining caps are supplied and can be used to provide additional cable strain relief.

Combined with other Clipsal Titanium® or Professional Series Products, they are the perfect solution to your voice and data communications needs.

### ELECTRICAL CHARACTERISTICS

Dielectric Strength	1,000V RMS at 60Hz for 1 minute
Current Rating	1.5A maximum
Insulation Resistance	200mΩ minimum
Contact Resistance	1mΩ per contact
Temperature Range	-40°C to +70°C
Transmission Performance	exceeds ISO/IEC 11801 Class E AS/NZS 3080:2003 Class E

### MECHANICAL CHARACTERISTICS

Modular Connector	
RJ45 8-Pin Connector	FCC part 68, Subpart F and IEC-60603-7 compliant
Durability	1,000 mating cycles
Material	Phosphor bronze with 50 micro-inches of gold over 100 micro-inches nickel plating
IDC Connector	
IDC Connector	Insulation slicing of 22 to 24 AWG (0.64mm to 0.41mm)
Insulation Diameter (Wire)	0.70mm - 1.40mm
Connector Material	Phosphor bronze with nickel plating

IDC Body & Cover Material Fire-Retardant, UL 94V-0, Plastic

### PRODUCT FEATURES

- aesthetic, contemporary design
- Clipsal's Patented flush-faced, zero footprint shutter mechanism
- fully compliant to AS/NZS 3080:2003, ISO/IEC 11801 Edition 2 2002 and ANSI/TIA/EIA-568-B Series Connecting Hardware Standards
- backward compatible with Category 5 and 5e products
- flexible locking tabs (30-Mech connectors)
- compatible with Clipsal GigaPRO, Krone and Bix tools
- UL 94V-0 rated
- accepts solid 22-24 AWG diameter conductors.

### CUSTOMER BENEFITS

- performs beyond Category 6 Standards
- shutter mechanism is easy to operate, simply insert the plug lead into the jack
- protection from dust ingress, insect infestation and the insertion of foreign objects
- various colours for easier circuit identification
- backward compatible with Category 5 and 5e products, allowing component mixing without degrading the network below the minimum component category
- 30-Mech style fits all Clipsal Wall Plates (Australian, US and British), giving the customer access to the most popular plates on the market
- for use in Multi-user Telecommunication Outlet Applications (MUTO) and Consolidation Points (CP)
- flexible locking tabs allow for easy removal from Wall Plates (30-Mech)
- clear IDC caps that allow for termination verification and assist in cable retention.
- compatible with Clipsal GigaPRO, Krone and Bix tools, allowing for a wider choice of tools for installers
- industry leading Lifetime Warranty - unique to the market!

### COLOURS

White Electric (WE), Black (BK),  
Soft Grey (SG), Green (GR),  
Red (RD), Yellow (YL) & Blue (BU).



CATALOGUE NO.	DESCRIPTION
<b>30RJ88SMA6</b>	Category 6 Clipsal Titanium® Modular Jack, 30-Mech
<b>RJ88SMA6</b>	Category 6 Clipsal Titanium® Modular Jack, Keystone
<b>30RJ88SMA6SH</b>	Category 6 Clipsal Titanium® Shuttered Modular Jack, 30-Mech
<b>RJ88SMA6SH</b>	Category 6 Clipsal Titanium® Shuttered Modular Jack, Keystone

## Category 5e Modular Jacks 5e



The Clipsal Datacomms Clipsal Titanium® range of products are the next generation of data communications solutions.

The Category 5e shuttered modular jacks incorporate Clipsal's patented shutter mechanism. These modular jacks are colour-coded for both 568A and 568B standards and can be terminated using a Clipsal GigaPRO or Krone tool.

Clear wire retaining caps are supplied and can be used to provide additional cable strain relief.

Combined with other Clipsal Titanium® or Professional Series Products, they are the perfect solution to your voice and data communications needs.

### ELECTRICAL CHARACTERISTICS

Dielectric Strength	1,000V RMS at 60Hz for 1 minute
Current Rating	1.5A maximum
Insulation Resistance	500mΩ minimum
Contact Resistance	2mΩ per contact
Temperature Range	-40 °C to +70 °C
Transmission Performance	exceeds ISO/IEC 11801 Class E AS/NZS 3080:2003 Class E

### MECHANICAL CHARACTERISTICS

<b>Modular Connector</b>	
RJ45 8-Pin Connector	FCC part 68, Subpart F and IEC-60603-7 compliant
Durability	750 insertion cycles min.
Material	Phosphor bronze with 50 micro-inches of gold over 100 micro-inches nickel plating
<b>IDC Connector</b>	
IDC Connector	Insulation slicing of 22 to 24 AWG (0.64mm to 0.41mm)
Insulation Diameter (Wire)	0.70mm - 1.60mm
Connector Material	Phosphor bronze with nickel plating

IDC Body & Cover Material Fire-Retardant, UL 94V-0, Plastic

### PRODUCT FEATURES

- aesthetic, contemporary design
- clipsal's Patented flush-faced, zero footprint shutter mechanism
- fully compliant to AS/NZS 3080:2003, ISO/IEC 11801 Edition 2 2002 and ANSI/TIA/EIA-568-B Series Connecting Hardware Standards
- flexible locking tabs (30-Mech connectors)
- compatible with Clipsal GigaPRO or Krone tool
- UL 94V-0 rated
- accepts solid 22 - 24 AWG diameter conductors

### CUSTOMER BENEFITS

- shutter mechanism is easy to operate, simply insert the plug lead into the jack
- protection from dust ingress, insect infestation and the insertion of foreign objects
- available in various colours for easier circuit identification
- 30-Mech style fits all Clipsal Wall Plates (Australian, US and British), giving the customer access to the most popular plates on the market
- for use in Multi-user Telecommunications Outlet Applications (MUTO) and Consolidation Points (CP)
- flexible locking tabs allow for easy removal from Wall Plates (30-Mech)
- clear IDC caps that allow for termination verification and assist in cable retention
- compatible with Clipsal GigaPRO or Krone tool, allowing for a wider choice of tools for installers
- industry leading Lifetime Warranty - unique to the market!

### COLOURS

White Electric (WE), Black (BK), Soft Grey (SG), Green (GR), Red (RD), Yellow (YL) & Blue (BU).

30RJ88SMA5 also available in:  
Cream (CM), Desert Sand (DS).



CATALOGUE NO.	DESCRIPTION
30RJ88SMA5	Category 5e Clipsal Titanium® Modular Jack, 30-Mech
RJ88SMA5	Category 5e Clipsal Titanium® Modular Jack, Keystone
30RJ88SMA5SH	Category 5e Clipsal Titanium® Shuttered Modular Jack, 30-Mech
RJ88SMA5SH	Category 5e Clipsal Titanium® Shuttered Modular Jack, Keystone

# Flexiport Wall Plates



The Clipsal Titanium® Flexiport Wall Plates is an exclusive series which makes a statement. Flexiport is the first product to incorporate a swing cradle design in wall plate. The swing cradle contains a Clipsal Titanium® shuttered modular jack pivoting on a grid assembly; allowing it to rotate up to 90° and provide multiple angles. With this innovative design, Flexiport Wall Plates ensure patch cord plug flexibility and reduce the stresses of cable bending.

In the world of higher data transmission speeds, more stringent bandwidth requirements and increasingly complex networks a wall plate with effective cable management is more crucial than ever. Clipsal Titanium® Flexiport Wall Plates represent the next generation of innovative Clipsal products.

### British Standard

Based on the C-Metro product line, these aesthetic, contemporary, British Standard wall plates (85mm x 85mm) are designed to accept up to two Clipsal Titanium® Shuttered Keystone Connectors with Flexiport features. The wall plate includes mounting screws, surround and channel application identification icons. With its flame retardant polycarbonate material, it providing extra durability, safety and smart contemporary aesthetics.

### Australian & US Standard

Based on the C-Concept product line and its classic architectural curves, the C-Concept Series blends perfectly with the elements of the past and the future to suggest subtle sophistication. Flexiport Australian style and US style wall plates are compatible with Australian Standard (68mm x 110mm) and US Standard (110mm x 68mm) dimensions and are designed to accept up to 2 Clipsal Titanium® shuttered Keystone connectors. Wall plate includes mounting screws and the surround. Utilising a flame retardant polycarbonate material, they offer extra durability, safety and a classical look for stylish interior design.

### PRODUCT FEATURES

- adjustable outlet jack cradle allow up to 90° inclination to ensure easy access
- angled outlet jack cradle to reduce patch cable bending
- classical and stylish design
- designed to accept Clipsal Titanium® RJ45 Keystone Modular Jacks
- supplied complete with self tapping screws
- flame retardant polycarbonate material with finely polished finishing for extra durability, safety and a smarter look.

### CUSTOMER BENEFITS

- ensure patch cord plug access flexibility and reduce cable bending
- contemporary design will improve the aesthetics of all installations
- complete with all mounting and fixing hardware
- flame retardant polycarbonate material with finely polished finishing for extra durability, safety and a smarter look
- industry leading Lifetime Warranty - unique to the market!

### TECHNICAL CHARACTERISTICS

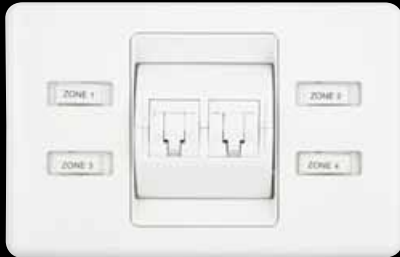
Material	Polycarbonate
<b>Dimensions (H x W x D)</b>	<b>Grid Plate only</b>
British Standard	85mm x 85mm x 39mm
Australian Standard	68mm x 110mm x 40mm
US Standard	110mm x 68mm x 40mm
	<b>Grid Plate with Surround</b>
British Standard	86mm x 86mm x 39mm
Australian Standard	69mm x 111mm x 40mm
US Standard	111mm x 69mm x 40 mm

CATALOGUE NO.	DESCRIPTION
<b>E3000RJ1A5S (XX)</b>	E3000 Series Category 5e Shuttered, 1 Gang Flexiport Wall Plate
<b>E3000RJ2A5S (XX)</b>	E3000 Series Category 5e Shuttered, 2 Gang Flexiport Wall Plate
<b>E3000RJ1A6S (XX)</b>	E3000 Series Category 6 Shuttered, 1 Gang Flexiport Wall Plate
<b>E3000RJ2A6S (XX)</b>	E3000 Series Category 6 Shuttered, 2 Gang Flexiport Wall Plate
<b>U31HRJA5S (XX)*</b>	US Style, Category 5e Shuttered, 1 Gang Horizontal Flexiport Wall Plate
<b>U32HRJA5S (XX)*</b>	US Style, Category 5e Shuttered, 2 Gang Horizontal Flexiport Wall Plate
<b>U31VRJA5S (XX)*</b>	US Style, Category 5e Shuttered, 1 Gang Vertical Flexiport Wall Plate
<b>U32VRJA5S (XX)*</b>	US Style, Category 5e Shuttered, 2 Gang Vertical Flexiport Wall Plate
<b>U31HRJA6S (XX)*</b>	US Style, Category 6 Shuttered, 1 Gang Horizontal Flexiport Wall Plate
<b>U32HRJA6S (XX)*</b>	US Style, Category 6 Shuttered, 2 Gang Horizontal Flexiport Wall Plate
<b>U31VRJA6S (XX)*</b>	US Style, Category 6 Shuttered, 1 Gang Vertical Flexiport Wall Plate
<b>U32VRJA6S (XX)*</b>	US Style, Category 6 Shuttered, 2 Gang Vertical Flexiport Wall Plate

**(XX) for colour: (GS) Grey & Silver, (TS) Titanium Grey & Silver, (WE) White**

\*Not available in Australian and New Zealand markets.

# Flexiport C2000 Series Wall Plates



The Clipsal Titanium® C2000 Series Wall Plates are designed to accept Clipsal Titanium® Keystone modular Jacks and other Clipsal Keystone Modular Jack configurations. All Clipsal Titanium® C2000 Series Wall Plates come standard with a designation labelling behind a clear removable window, and a provision to insert a coloured icon designating the channel application. Up to two Clipsal Titanium® Keystone Modular Jacks can be inserted into the rotating bezel, which provides a full 90° field of movement. This is particularly beneficial in situations where workstation space is reduced and an angled outlet will overcome possible over-flexing of the patch cord.

#### Channel Application Identification Icons

Channel Application identification is accomplished via colour matched snap-in plastic icons that are preprinted with symbols or text labels.

- Text icon labels in seven bright colours preprinted with Category 5e & 6, phone, fax, LAN and ISDN.
- Plus seven brightly coloured image icons in grey, green, purple, blue, yellow, orange and red.

#### TECHNICAL CHARACTERISTICS

Material	Polycarbonate	
Dimensions (H x W)	Grid plate only	Grid plate with Surround
British Standard	85mm x 85mm	85mm x 85mm
Australian Standard	68mm x 110mm	69mm x 111mm
US Standard	110mm x 68mm	111mm x 69mm

#### PRODUCT FEATURES

- designed to accept RJ45 Keystone modular jacks
- bezel rotates at full 90° top to bottom
- grid plate comes with standard white colour surrounds
- protected clear designation label windows
- provision on grid plate assemblies and inserts to snap-in coloured plastic icons (icon sold separately)
- supplied complete with self tapping screws.

#### CUSTOMER BENEFITS

- contemporary design will improve the aesthetics of all installations
- rotating bezel allows users to alter the angle of the workstation outlet, reducing the possibility of exceeding the recommended bend radius on patch cords
- complete with all mounting and fixing hardware
- the front labeling system provides a clear and efficient means of identifying outlets
- flame retardant polycarbonate material with finely polished finishing for extra durability, safety and a smarter look
- industry leading Lifetime Warranty - unique to the market!

CATALOGUE NO.	DESCRIPTION
<b>C2031HRJA5S, WE</b>	1 Gang Category 5e RJ45 Keystone Wall Plate with Channel & Circuit ID Slot
<b>C2032HRJA5S, WE</b>	2 Gang Category 5e RJ45 Keystone Wall Plate with Channel & Circuit ID Slot
<b>C2031HRJA6S, WE</b>	1 Gang Category 6 RJ45 Keystone Wall Plate with Channel & Circuit ID Slot
<b>C2032HRJA6S, WE</b>	2 Gang Category 6 RJ45 Keystone Wall Plate with Channel & Circuit ID Slot

*Products are shipped unassembled. Surrounds are supplied with grid plates.*



# 2000 Series Wall Plates

## Clipsal Titanium® Version



The Clipsal Titanium® 2000 Series Wall Plates are compatible with the British Standard (83mm x 83mm), US Vertical Standard (68mm x 108mm) and Australian Horizontal Standard (110mm x 67mm) dimensions and are designed to accept Clipsal Titanium® Keystone Modular Jack and other Clipsal Keystone modular jack configurations.

All Clipsal Titanium® 2000 Series Wall Plates come standard with designation labelling behind a clear removable window and provision to insert a coloured icon designating the channel application. Up to two Clipsal Titanium® Keystone Modular Jacks can be inserted into the unshuttered British, US vertical and the Australian horizontal wall plate.

### Channel Application Identification Icons

Channel Application identification is accomplished via colour matched snap-in plastic icons that are preprinted with symbols or text labels.

- Text icon labels in seven bright colours preprinted with Category 5e & 6, phone, fax, LAN and ISDN.
- Plus seven brightly coloured image icons in grey, green, purple, blue, yellow, orange and red.

### TECHNICAL CHARACTERISTICS

Material	Polycarbonate	
	Grid plate only	Grid plate with Surround
British Standard	85mm x 85mm	86mm x 86mm
Australian Standard	68mm x 110mm	69mm x 111mm
US Standard	110mm x 68mm	111mm x 69mm

### PRODUCT FEATURES

- designed to accept RJ45 Keystone modular jacks
- grid plate comes with standard white colour surrounds
- protected clear designation label windows
- provision on grid plate assemblies and inserts to snap-in coloured plastic icons (icon sold separately)
- supplied complete with self tapping screws.

### CUSTOMER BENEFITS

- contemporary design will improve the aesthetics of all installations
- colour coordinate the interior - select from a wide range of C-Graphic or Metal Finish wall plates and surrounds
- complete with all mounting and fixing hardware
- the front labeling system provides a clear and efficient means of identifying outlets
- flame retardant polycarbonate material with finely polished finishing for extra durability, safety and a smarter look
- industry leading Lifetime Warranty - unique to the market!

### CATALOGUE NO. DESCRIPTION

<b>E2031RJJKI*</b>	1 Gang RJ45 Keystone Wall Plate with Channel & Circuit ID Slot
<b>E2032RJJKI*</b>	2 Gang RJ45 Keystone Wall Plate with Channel & Circuit ID Slot
<b>E2031RJ6SKI*</b>	1 Gang Category 6 Shuttered Outlet Wall Plate with Channel & Circuit ID Slot
<b>E2032RJ6SKI*</b>	2 Gang Category 6 Shuttered Outlet Wall Plate with Channel & Circuit ID Slot
<b>2031HRJKI</b>	1 Gang RJ45 Keystone Wall Plate with Channel & Circuit ID Slot, Horizontal
<b>2032HRJKI</b>	2 Gang RJ45 Keystone Wall Plate with Channel & Circuit ID Slot, Horizontal
<b>2033HRJKI</b>	3 Gang RJ45 Keystone Wall Plate with Channel & Circuit ID Slot, Horizontal
<b>2031VRJKI</b>	1 Gang RJ45 Keystone Wall Plate with Channel & Circuit ID Slot, Vertical
<b>2032VRJKI</b>	2 Gang RJ45 Keystone Wall Plate with Channel & Circuit ID Slot, Vertical
<b>2031HRJ6SKI</b>	1 Gang Category 6 Shuttered Outlet Wall Plate with Channel & Circuit ID Slot, Horizontal
<b>2032HRJ6SKI</b>	2 Gang Category 6 Shuttered Outlet Wall Plate with Channel & Circuit ID Slot, Horizontal
<b>2031VRJ6SKI</b>	1 Gang Category 6 Shuttered Outlet Wall Plate with Channel & Circuit ID Slot, Vertical
<b>2032VRJ6SKI</b>	2 Gang Category 6 Shuttered Outlet Wall Plate with Channel & Circuit ID Slot, Vertical

Products are shipped unassembled. Surrounds are supplied with grid plates.

\*Not available in Australian and New Zealand markets.

# Horizontal Cable Management Panel



The Clipsal Titanium® Cable Management Panel is a superior product delivering the best cable management support when used in conjunction with other Clipsal Titanium® Series products.

The panel is a one rack unit (1U) item designed for use in 19" rack environments, managing patch cords that are connected between patch panels and/or hubs. The product is recommended for mounting between every second row of patch panels/hubs.

The unique clips provide a quick and simple means of installing the panel in the rack or cabinet. Each of the 4 cable management rings have been reinforced to accommodate the capacity for up to 50 patch cords. The rings have been designed to facilitate easy insertion and removal of the patch cords, necessary in dynamic environments where movement and changes are unavoidable.

## TECHNICAL SPECIFICATIONS

Dimensions (W x D x H)	482mm x 114mm x 42.5mm (1U)
------------------------	-----------------------------

## PRODUCT FEATURES

- rack mount clips eliminate the need for cage nuts and screws
- reinforced cable management rings can accommodate up to 50 patch cords
- cavities behind each ring provide additional space for cable slack
- additional depth on cable rings ensures compliance with minimum bend radius requirements
- compliments Clipsal Titanium® Patch Panel styling

## CUSTOMER BENEFITS

- quick product installation using rack mount clips
- rapid insertion and removal of patch cords.

CATALOGUE NO.	DESCRIPTION
RJ1UCMP	1U Clipsal Titanium Cable Management Panel

# Fibre Management Enclosure



The Clipsal Titanium® Fibre Management Enclosure is a superior and compact fibre termination solution. It provides a rack/cabinet mountable solution with a provision to splice up to 48 external optional fibres to 48 pigtails.

Installed with a pair of cable radius guides, this enclosure can also facilitate a maximum of 24 fibre patching applications. This powder coated steel enclosure comes with a tinted removable Plexiglass cover for ease of installation, inspection and testing. Innovated design such as slide in/out cable entry provides additional flexibility during installation, movement or changes in the future.

Designed with multiple applications in mind, the Clipsal Titanium® Fibre Management Enclosure can accommodate different types of modular adaptor panels and splice trays (optional) to give outstanding performance and functionality.

## TECHNICAL SPECIFICATIONS

Material	Powder Coated Mild Steel
Accommodation	Up to 24 x ST Connectors Up to 24 x SC Connectors Up to 48 LC Connectors Up to 48 x MTRJ Connectors
Cable Termination	Direct Termination
Options	Mechanical & Fusion Splicing

## PRODUCT FEATURES

- 1U panel and 19" front rack mounting enclosure provides patching and fibre slack storage capability conduit or standard tube interfacing
- accommodates up to 3 connector panels
- access connector panel with front quick release latch cover
- nylon cable radius guide and centre strength member clamp
- cable fibre track cover provides additional protection and a clean outlook
- tinted, easy access slide-out and removable Plexiglass cover
- accommodates both Single-Mode and Multi-Mode fibre
- additional rear mount ears (a set of 2) for cabinet mounting
- rugged steel construction in graphite finish
- optional splice tray can be mounted to the unit
- slide in cable entry panel with 2 x 25mm diameter holes.

## CUSTOMER BENEFITS

- provide patching and fibre slack storage capability with technicians and users in mind
  - The technician's side has facilities for securing the cable, storing fibre slack and arranging the terminated fibres
  - The user's side has similar features for the management of fibre optic patch cord
- 66mm deep front cable panel for patch cord management and protection
- side-out medium density optical fibre management enclosure (SoMedD) for optimum access, to ease installation, inspection and testing
- slide-in cable entry panel with 2 x 25mm diameter holes allow flexible conduit or standard tube interfacing during installation
- nylon cable radius guide within the enclosure to accommodate excess fibres while maintaining fibre bend radius
- cable fibre track cover to give additional protection and clean outlook
- optional splice tray can be mounted to manage and protect either fusion or mechanical splices.

CATALOGUE NO.	DESCRIPTION
<b>TFM1U</b>	1RU 24-Port SC Fibre Sliding Enclosure, Unloaded
<b>TFM1ULCD4P</b>	Adaptor Panel LC Duplex with 4 Adaptors
<b>TFM1ULCD8P</b>	Adaptor Panel LC Duplex with 8 Adaptors
<b>TFM1UMTRJ4P</b>	Adaptor Panel MTRJ Duplex with 4 Adaptors
<b>TFM1UMTRJ8P</b>	Adaptor Panel MTRJ Duplex with 8 Adaptors
<b>TFM1USCD4P</b>	Adaptor Panel SC Duplex with 4 Adaptors
<b>TFM1USTD8P</b>	Adaptor Panel ST Simplex with 8 Adaptors
<b>TFM1UBLANKP</b>	Adaptor Panel Blank without Adaptor

CATALOGUE NO.	DESCRIPTION
<b>TFM1USC24*</b>	1RU 24-Port SC Fibre Sliding Enclosure
<b>TFM1UST24*</b>	1RU 24-Port ST Fibre Sliding Enclosure
<b>TFM1ULC48*</b>	1RU 48-Port LC Fibre Sliding Enclosure
<b>TFM1UMTRJ48*</b>	1RU 48-Port MTRJ Fibre Sliding Enclosure
<b>TFSK24F*</b>	Fusion 24 Splice Tray
<b>TFSK48F*</b>	Fusion 48 Splice Tray

\*Available in Southeast Asia, Asia and Middle Eastern markets.

# For further information call: 1800 728 728

(Australia only)

## Product of Clipsal Australia Pty Ltd

ABN 27 007 873 529

### Head Office

12 Park Terrace, Bowden  
 South Australia 5007  
 Telephone (08) 8269 0511  
 Facsimile (08) 8340 1724  
 Internet clipsal.com  
 E-Mail plugin@clipsal.com.au

### National Customer Service Enquiries:

**1300 2025 25**

### National Customer Service Facsimile:

**1300 2025 56**

### Area Representatives

<b>NSW</b>	All areas	0418 238 830
	North	0409 313 402
	South	0418 845 158
	West	0407 939 535

<b>ACT</b>	Canberra	0419 238 824
	Canberra/Goulburn	0418 164 070
	Canberra/Yass	0419 847 732

<b>VIC</b>	All areas	1300 2025 25
------------	-----------	--------------

<b>QLD</b>	Cairns	0418 773 254
	Gold Coast	0419 636 633
	Mackay	0418 752 134
	Maryborough	0418 664 338
	North Qld	0418 862 700
	Northern Rivers	0418 768 902
	Rockhampton	0419 869 752
	Sunshine Coast	0418 711 786
		0438 282 299
	Toowoomba	0418 726 394
	Townsville	0418 180 372

<b>WA</b>	Bunbury	0418 931 684
	Kalgoorlie & Eastern Gold Fields	0417 928 981
	Karratha	0418 937 249

<b>SA</b>	Riverland/Mildura/ Broken Hill	0418 596 145
-----------	-----------------------------------	--------------

<b>NT</b>	Darwin	0409 282 307
-----------	--------	--------------

<b>TAS</b>	All areas	0418 138 456
------------	-----------	--------------

### International Enquiries

### International Sales and Marketing

Telephone + 61 8 8269 0587  
 Facsimile + 61 8 8340 7350  
 E-Mail export@clipsal.com.au

### New Zealand

**Clipsal Industries (NZ) Ltd**  
 Telephone (09) 576 3403  
 Facsimile (09) 576 1015  
 E-Mail headoffice@clipsal.co.nz

### Customer Service

Free Fax (0508) 250 305  
 Auckland/Mobile Phone (09) 572 0014  
 Free Phone (0508) CLIPSAL  
 2547725

You can find this brochure and many others online in PDF format at:  
**clipsal.com**

Follow the links off the home page or access the following page directly:  
**clipsal.com/wat\_lib\_pdf.cfm**

**clipsal.com**

Clipsal Australia Pty Ltd reserves the right to change specifications, modify designs and discontinue items without incurring obligation and whilst every effort is made to ensure that descriptions, specifications and other information in this catalogue are correct, no warranty is given in respect thereof and the company shall not be liable for any error therein.

©Copyright Clipsal Australia Pty Ltd 2006.  
 All rights reserved.

This material is copyright under Australian and international laws. Except as permitted under the relevant law, no part of this work may be reproduced by any process without prior written permission of and acknowledgement to Clipsal Australia Pty Ltd.