

15" Touch Server



The Embedded Server is the centre of the Automation network - housing all the data including macros, logic and interface information in one slimline recessed wall mount unit.

The Embedded Server can react to events generated from any IR, RS232 or TCP/IP input - RTI, Philips TSU9600 or NevoSL remotes, Clipsal C-Bus, Dynalite, AV receivers, multi-room audio keypads, security PIRs & reed switches, and more.

Product Highlights

- *Fanless, Embedded Server & Interface*
- *Logic and macro engine across all connected devices*
- *Bi-directional control of lighting and power control systems including Clipsal C-Bus and Dynalite**
- *Audio visual integration via Ethernet, RS232 and Infra-red**
- *Security & access control integration via Ethernet with Ness M1/Easy 16/Easy 8**
- *Display security camera and intercom audio/video feeds from DVR, IP cameras and video switches*
- *Control, record and distribute audio and video content around the home from PCs, Macs and NAS **

Features and Benefits

15" diagonal 4:3 touch panel

2x bi-directional RJ-45 ports onboard for RS232/422/485; remote RS232 ports via ethernet adapters (ERI-xx)

Integrated webcam, speaker and microphone for intercom and IP communications functionality

Intuitive scene and timer programming allows basic configuration changes to be made through the user interface

External Links enable the user to access a preset list of their favourite web pages directly from the touch panel

Switch Builder allows for fast and easy programming of the entire Embedded Server and Interface

Easily save and load pre-configured or saved RS232 or Infra-red devices into the project

Easy installation via optional back box or in-wall mechanism

Range of faceplates and bezels to suit any décor

Ambient light sensor detects ambient light for automated screen adjustments to optimise viewing

Requires 10-28V DC and 1x network cable wired back to a network switch or router. Power supply may be located remotely

Modules and Drivers

Included:

1x Embedded Server (MOD-SRV)

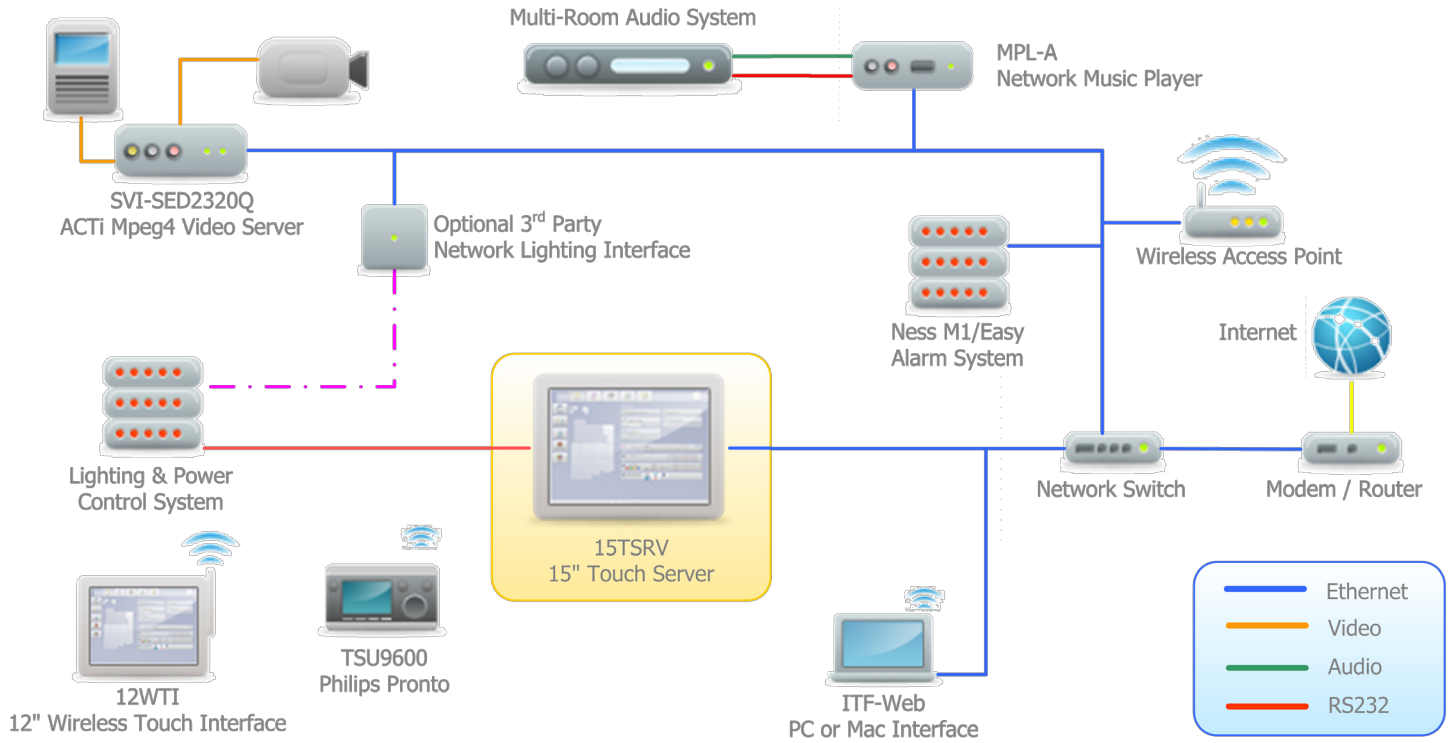
1x Embedded Touch Interface (MOD-ITF)

1x Serial Connections (MOD-SER)

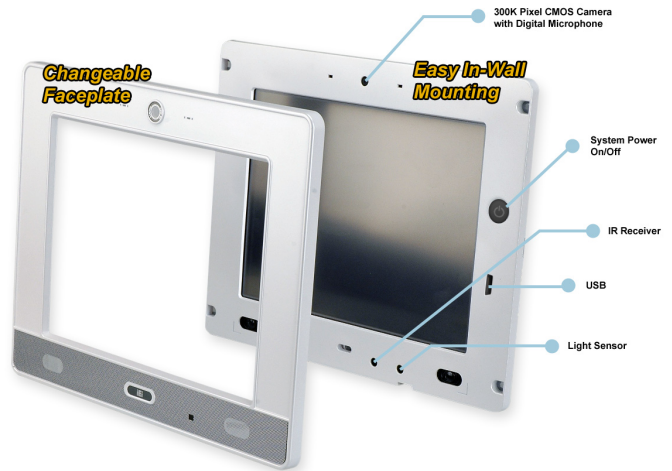
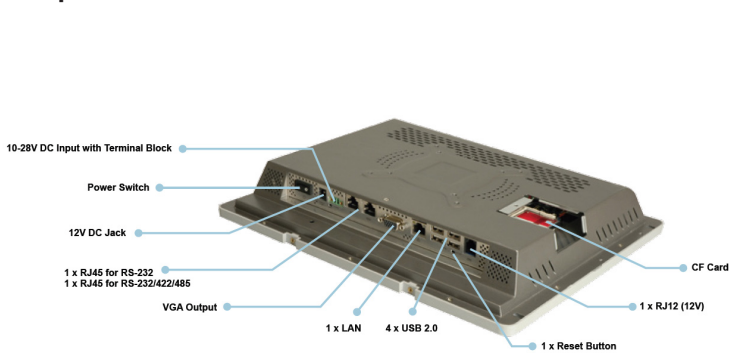
1x Links (Internet Browser) (MOD-WEB)

Schematic

15TSRV



Specifications



General:

Intel Atom N270 1.6Ghz
 Remote access via VNC port 5900
 Requires external network attached storage for music library
 2GB Flash Memory
 1GB DDR2 Ram
 Fanless construction
 XP Embedded Operating System
 Power On/Off LED on front panel

Display:

15" TFT LCD
 Resolution: 1024 x 768 XGA
 Touch screen: Resistive Type 5-Wire (Touch controller IC is on board)
 Viewing angle: 140 degrees (H) , 125 degrees (V)
 Brightness: 350 cd/m
 Backlight MTBF (hrs) 50,000

Environmental and Mechanical:

Chassis Construction: ABS + PC plastic front frame
 Operating Temp: 0 - 50 degrees C (Fanless)
 Weight: 2.8KG
 Dimensions (WxDxH): 385.7 x 330.7 x 55.5mm
 Refer to 15WB for wall cut-outs

Power Consumption:

Power Requirement: 10-28V DC In
 Power Consumption: 49W
 Power Adapter: 60W, 240VAC 50/60hz

Optional Accessories:

15WB Recessed wall box
 15BZ-BL Black Acrylic bezel
 15BZ-WH White Acrylic bezel

* Additional components required. Level of control depends on extent of network. All brand and/or product names are trademarks of their respective owners. Specifications are subject to change without prior notice. E&OE.

